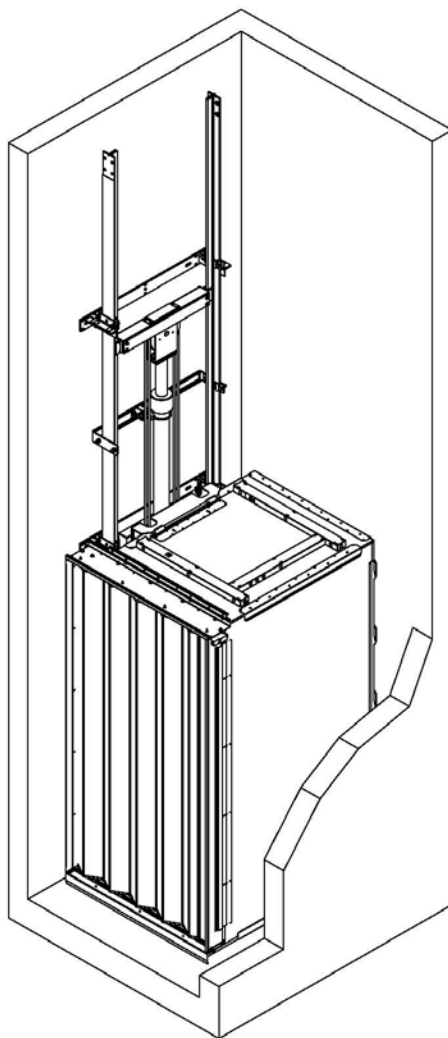


# Garaventa Elvoron HR

Residential Elevator  
Roped Hydraulic Drive System

---

## Owner's Manual



# The Garaventa Elvoron HR

---

Congratulations on the purchase of your new Elvoron HR – Residential Elevator. This manual describes the many features of the Elvoron HR, including how to operate it properly and how to perform simple safety and maintenance checks. Please make sure that you read this Manual before operating the elevator.

The serial number will be required when discussing service issues with your local Garaventa dealer or Garaventa factory technicians. Please make a note of the serial number in this Manual. It is printed on a label on the inside of the control box. Also, please record the date on which your Elvoron HR was installed. This is important for warranty reference.

**Lift Serial Number:** \_\_\_\_\_

**Date of Installation:** \_\_\_\_\_

Your Elvoron HR has been designed to provide years of reliable performance. However, it will require maintenance and service. Your Garaventa dealer is knowledgeable about the maintenance and service requirements of your lift. Please make note below for future contact.

## Local Authorized Garaventa Dealer:

**Name:** \_\_\_\_\_

**Address:** \_\_\_\_\_

**Telephone:** \_\_\_\_\_

# Table of Contents

---

<b>1. SAFETY FIRST.....</b>	<b>2</b>
STOP BUTTON .....	2
OPERATE AND MAINTAIN THE ELEVATOR REGULARLY .....	2
DO NOT OVERLOAD THE ELEVATOR .....	2
CHILDREN ARE NOT CARELESS....ONLY CARE-FREE AND THEY.....	2
SAFETY FEATURES – “DO NOT TAMPER WITH SAFETY FEATURES” .....	2
PUMP & MOTOR AREA CLEAR .....	2
<b>2. COMPONENT IDENTIFICATION .....</b>	<b>3</b>
<b>3. BASIC OPERATING INSTRUCTIONS.....</b>	<b>4</b>
HALL STATION .....	4
HALL DOORS .....	5
CAB GATES .....	5
CAR CONTROLS.....	5
<b>4. ADDITIONAL INSTRUCTIONS FOR OPTIONAL FEATURES.....</b>	<b>6</b>
EMERGENCY TELEPHONE .....	6
PLC CONTROLLER (PLC) .....	6
EMERGENCY BATTERY BACKUP POWER SUPPLY .....	6
EMERGENCY LIGHTING.....	6
WARNING ALARM.....	6
<b>6. PREVENTIVE MAINTENANCE.....</b>	<b>8</b>
SOME REFLECTIONS ON SAFETY WITH YOUR RESIDENTIAL ELEVATOR.....	9
<b>7. WARRANTY INFORMATION.....</b>	<b>10</b>
WARRANTY REGISTRATION.....	<b>ERROR! BOOKMARK NOT DEFINED.</b>

# 1. Safety First

---



The warning symbol to the left is used throughout this Owner's Manual to draw your attention to procedures that must be followed to avoid possible danger and injury.

The following procedures are very important to ensure the safe operation of your Garaventa Elvoron HR.



## Stop Button

The Elvoron HR is equipped with a red emergency stop button in the cab. To stop the lift in an emergency, press the stop button.

## Operate and Maintain the Elevator Regularly

Operate the lift on a regular basis and check that everything is working normally.

Routine preventive maintenance will ensure the lift is running properly and help avoid expensive breakdowns and repairs. Garaventa recommends maintaining your lift at least twice per year, but your authorized Garaventa dealer is better suited to recommend a maintenance program for your lift.



Do not operate the lift if it has been damaged. If you hear unusual noises or feel vibrations, contact your Garaventa dealer immediately.

Follow any recommendations of local elevator safety authorities that inspect the lift for potential safety issues.

## Do Not Overload the Elevator

Your Elvoron HR elevator is equipped with a capacity plate in the car which will show the capacity for your elevator, either 750 lbs. (340 kgs.) or 1000 lbs. (454 kgs.). **DO NOT EXCEED THIS CAPACITY!**



## CHILDREN ARE NOT CARELESS....ONLY CARE-FREE AND THEY...

*...MUST NOT BE ALLOWED TO PLAY ON YOUR ELEVATOR.*

*...MUST ALWAYS BE WITH AN ADULT WHEN USING YOUR ELEVATOR.*

*...MUST NEVER BE IN THE VICINITY OF THE ELEVATOR MACHINERY.*

*...MUST NEVER TRY AND SQUEEZE INTO THE SPACE BETWEEN THE INSIDE OF THE LANDING DOOR AND THE ELEVATOR CAR GATE OR HALL DOOR.*

## Safety Features – “Do Not Tamper with Safety Features”

***DO NOT PERMIT ANYONE OTHER THAN A TRAINED, EXPERIENCED ELEVATOR TECHNICIAN TO ADJUST OR SERVICE YOUR ELEVATOR.***

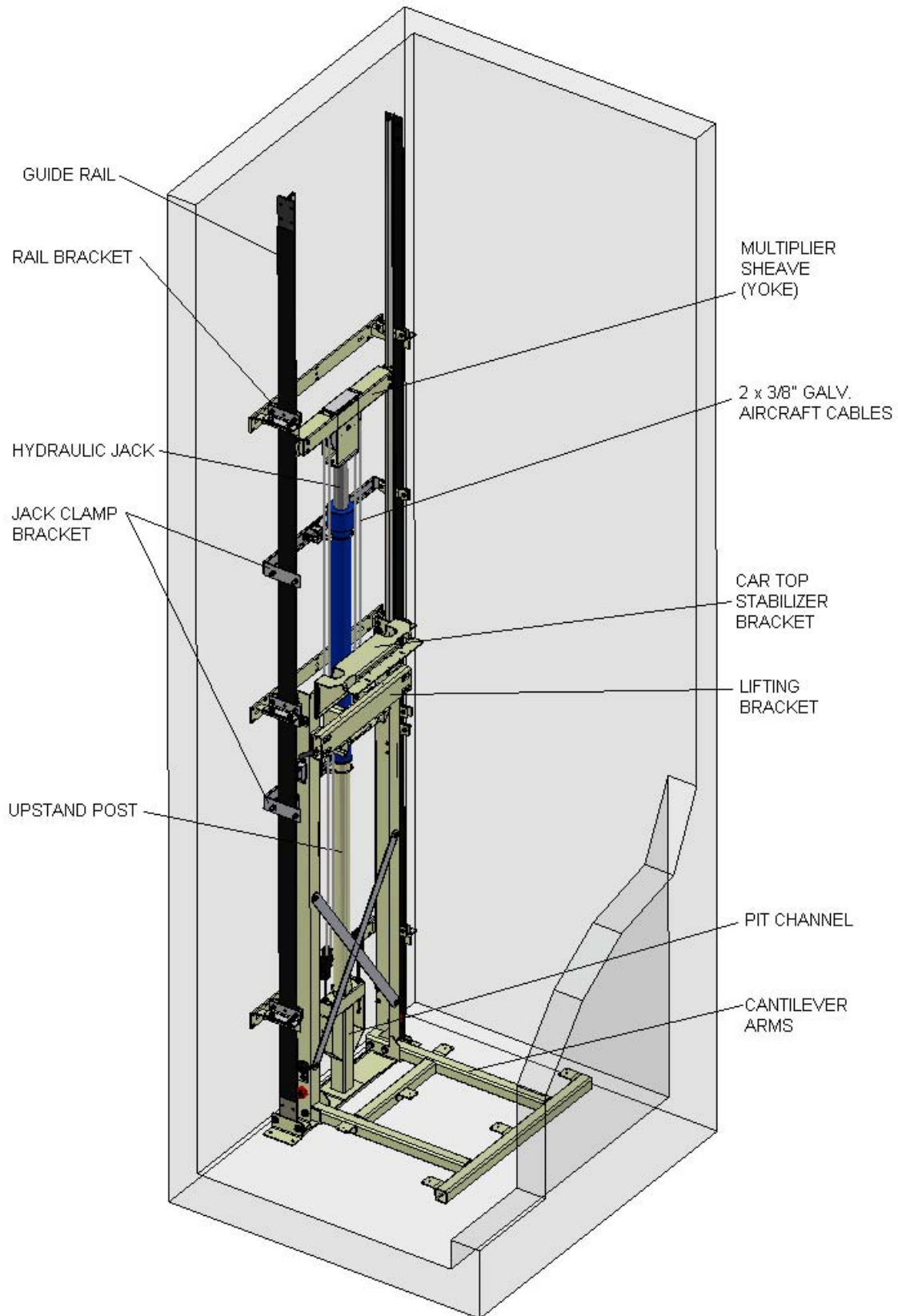


## Pump & Motor Area Clear

Keep the area around the pump and controller clear of all debris. Do not use as a storage room. In an emergency, a technician may have to access the main controls in a hurry!

## 2. Component Identification

---



# 3. Basic Operating Instructions

---

## Hall Station



- 1 If the hall station is provided with a device to restrict operation (key, swipe card, button pad, etc.) activate the device as indicated and press the button, if required.
- 2 Press the button once and release. The cab will automatically travel to your location and stop.
- 3 If the elevator cab is provided with a power operated car gate and hall door, they will automatically open when the cab arrives at the landing.
- 4 If applicable remove key or swipe card to deactivate the control panel.
- 5 Turn the door handle and pull the door open.



***Each landing door is provided with a code compliant electro-mechanical locking device that is designed to maintain the landing door in a closed and locked position when the elevator is away from the landing. This safety locking device is extremely important for the proper and safe operation of this elevator. **DISABLING OR BYPASSING THE INTENDED USE OF THE LANDING DOOR LOCKING DEVICES MAY RESULT IN SERIOUS INJURY OR DEATH!*****

## Hall Doors

- The landing or Hall Door must be closed and locked in order for the car to leave the landing. Once the cab has left a landing that door will remain locked until the cab returns to the landing.

## Cab Gates

- The Cab Gate must be completely closed to enable the car to travel to a different landing

***The car door/gate is provided with a code compliant electrical switch that will open the electrical operating safety circuits of the elevator and prevent operation if the car door/gate is left open or opened during travel of the elevator. This safety device is extremely important for the proper and safe operation of this elevator.***

## Car Controls



- 1 Close both the Hall Door and the Cab Gate.
- 2 If the car operating station is provided with a device to restrict operation (key, swipe card, button pad, etc.) activate the device as described and press a floor call button.
- 2 Press the desired floor button once and release. The cab will automatically travel to your location and stop.
- 3 If applicable remove key or swipe card to deactivate the control panel.
- 4 Open the cab gate, turn the door handle and open the hall door.
- 5 If the elevator cab is provided with a power operated car door or gate, the car door/gate will automatically open when the cab arrives at the requested landing.

### **Warning:**



- a. If the cab is equipped with a manual gate and door, they must be closed after exiting the cab. If not, all controls will remain inoperable.*
- b. An optional "entry" and "exit" timer (N.I.T. Timer) allows approximately six to nine seconds before the landing call devices become operational. This delay allows time for a person to enter/exit the cab before another landing call can take control of the lift.*
- c. The power operated car door/gate (if provided) is also equipped with a "re-opening" device that will stop and re-open the car door/gate if it encounters an obstruction during the closing cycle.*

# 4. Additional Instructions for Optional Features

---

## Emergency Telephone

The harmonized North American Elevator Code, ASME A17.1 in the USA and CSA B44 in Canada require that an emergency communicating device be installed in the elevator in addition to the alarm. This device is not standard equipment on a Garaventa Elvora elevator although wiring provisions for the telephone are provided. Your authorized Garaventa dealer can assist the telephone company in locating and wiring the telephone. There may be an additional cost from the installer for this assistance. There may be additional costs involved with the installation and ongoing fees for the telephone from your local telephone provider.

## PLC Controller (PLC)

The Elvora uses a two speed hydraulic valve for smooth stops starts and leveling and a shaft encoder system for accuracy, ease of installation and servicing. In addition, the Elvora is provided with a sophisticated Programmable Logic Controller (PLC) that is programmed to visually display and identify in plain English any service problems that may occur.

## Emergency Battery Backup Power Supply

Garaventa provides an emergency battery backup as standard equipment. It provides a continuous source of backup power in the event of a building power failure. The back-up power supply is charged through the main controller. If the battery is depleted for any reason, it will emit a beeping sound indicating that service is required.

The Battery backup provides power for the alarm, the cab lighting, controls, interlocks and door for approximately one hour after a power failure.

In the event of a main building power failure the elevator will automatically cancel all "UP" direction calls and begin traveling in the down direction to park at the lowest landing. The elevator will accept a car call to any landing it will pass on the way to the bottom and allow the passenger to exit at that floor. The elevator will then continue to the bottom floor and remain parked until normal power is restored. The PLC display will read "EMERGENCY POWER RETURNED" until normal power is restored".

If a user is within the cab when the power failure occurs, this feature will allow him/her to travel to a lower floor and exit the elevator.

**NOTE:** *The elevator cannot travel in the UP direction when the Battery Backup power has activated in response to a building power failure. All electrical safety features remain in place during operation of the Battery Backup System.*

## Emergency Lighting

In the event of a main power failure, the cab lights will remain illuminated when the UPS emergency Power Supply activates.

## Warning Alarm

The elevator warning alarm, which may be a bell or a buzzer, will remain operational in the event of a building power supply. Press the ALARM button or the STOP button to activate the alarm.

# 5. Instructions for Emergency Manual Lowering

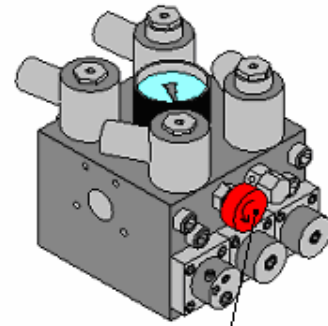
---

In an extreme emergency, the elevator cab can be lowered manually in order to evacuate a stranded passenger. It is preferable to call a trained technician prior to using the manual lowering device. However, if time is of the essence then the elevator can be lowered manually using the following method. Do not attempt to use the manual lowering device unless you have been instructed in its safe operation and use.

1. Talk to the person in the elevator and tell them what you are about to do. Tell them to remain calm and to stay well back and clear of the car doors/gate.

2. Go to the pump and control room and **TURN OFF THE MAIN POWER SUPPLY AT THE CIRCUIT BREAKER OR THE DISCONNECT SWITCH.**

3. Locate the main hydraulic control valve on the top of the pump unit oil reservoir and note the **RED** round handle/knob as shown in the adjacent illustration.



**RED round handle**

**Hydraulic Control Valve**

4. To lower the car you must turn the **RED** handle/knob counter-clockwise until it stops and hold it in that position. The knob is spring-loaded and the elevator will stop immediately upon release of the handle.

5. Once again alert the occupant that you are going to lower the elevator, ask them to advise you when the elevator is level with the bottom floor.

**6. RELEASE THE RED HANDLE TO STOP THE ELEVATOR.**

7. Once the elevator has arrived at the bottom landing the occupant can open the lower floor door by raising the emergency release lever protruding from the door locking device mounted on the strike jamb side of the doorway, near the top. Raise the lever and open the door at the same time. The occupant can now exit the elevator.

If the passenger can't reach the release, the door can be opened from outside by using a special emergency key.

## 6. Preventive Maintenance

---

Regular maintenance will keep your Garaventa Elvoron HR in proper operating condition. Like all mechanical devices, your Elvoron requires a regular procedure of inspection and maintenance to ensure continued operation in top condition. To verify proper operating condition of your unit, the items listed below must be inspected and, if necessary, serviced every six (6) months. Additional inspections may be required depending on usage.

***Very Important: Only authorized Garaventa technicians should be permitted to service the landing door locking device.***

1. Listen for any unusual noises or bumps and scrapes. These may indicate certain components are starting to wear and require changing. Alert your servicing contractor if this occurs.
2. Test and verify that the emergency telephone, alarm, back-up power and manual lowering system are operational.
3. Check each landing door electro-mechanical locking device for proper operation. The elevator must not move away from the floor if a door or gate is open. Verify that the door is locked when the elevator is away from the floor.
4. Use a Flannel cloth and a light detergent to clean the surface of the car wall panels. Do not use an abrasive cleaner.
5. Wipe stainless steel, brass or glass with a soft, lint free cloth and a non-abrasive cleaner such as window cleaner. Brass has been surface treated for long, bright life.
6. The high intensity 24 volt Halogen or Xenon lights used for the car lighting require special handling. Follow the instructions on the carton of the replacement lamps.



**REPLACE WITH 24 VOLT LAMPS ONLY -  
INSTALLING A LAMP WITH ANY OTHER VOLTAGE  
MAY DAMAGE THE EQUIPMENT AND VOID THE  
WARRANTY.**

7. Keep the area around the pump and controller clear of all debris. Do not use as a storage room. In an emergency, a technician may have to access the main controls in a hurry!

## Some reflections on Safety with your Residential Elevator

Your authorized Garaventa dealer has a responsibility to give you the following tour of your elevator prior to turnover. He must show and explain the operation of the elevator controls as well as alerting you to the potential hazards that may be encountered during use. He should review the safety notices in the Owner's Manual with you at the same time. In addition, he should review the minimum maintenance requirements of the elevator in order to keep it in "like new" condition.

Ensure your installer points out and describes the following for you, including, as applicable, its proper use and the hazards associated with improper use:

- a. The cab gate and its safety switch.
- b. The landing doors, jambs and their electro-mechanical locking devices.
- c. The manual lowering procedure.
- d. Procedure for opening hall door with emergency release from inside and outside cab.
- e. The rated capacity and the hazards of overloading.
- f. The cab or landing restricted access devices (key switches, etc.) Where provided.
- g. Fuses and circuit breakers in the elevator controls and the main power supply.
- h. The hazards of improper storage of non-elevator equipment in the machine area or room.
- i. The importance of regular maintenance.
- j. Proper use of cab operating controls.
- k. Proper use of landing operating controls.
- l. Emergency communication devices. (telephone, audible alarm, etc.).
- m. Emergency Power Supply (Battery backup, etc.). (If provided).
- n. Procedure for evacuating stranded passengers in an emergency.
- o. Who to call in an emergency and the emergency numbers. It's best to sign only with company that offers "round the clock" emergency service...breakdowns don't happen at your convenience!

# 7. Warranty Information

---

## Two Year Limited Warranty

Garaventa Lift warrants this elevator to be free of defects in materials and workmanship under normal use and service for a period of two years from the date of purchase, reasonable wear and tear excluded. Proof of purchase showing the purchase date is required to validate the warranty.

This Warranty does not extend to any elevator that has been subjected to misuse, neglect, accident, modifications, or damage from fire, lightning, or water, or used in violation of the instructions furnished, nor units repaired or altered by other than an authorized Garaventa Lift dealer. This warranty does not cover service work, oiling, cleaning and minor adjustments that are required from time to time. Consult your local authorized Garaventa Lift dealer.

Garaventa Lift's liability hereunder is limited to repair and replacement only. Transportation and local labor charges are not covered. Garaventa Lift accepts no liability for any loss or damage resulting from the use or misuse of the Elvoron, whether such loss or damage is direct, indirect or consequential. All other express or implied warranties, statutory or otherwise, are excluded.

Note that validation of the warranty and the extended warranty programs require that an authorized technician properly maintain your elevator in accordance to the recommendations found in Section 6.

## Warranty Registration

A warranty registration page is enclosed with this Owner's Manual. Please complete and return it to Garaventa within 10 days of purchase.

## Optional Extended Warranty Protection (Canada & USA Only)

As an option, you are able to purchase extended warranty protection for your Garaventa Elvoron (***Preventive Maintenance Agreement required***). This will extend your warranty from two years to 7 years (warranty details available). The extended warranty covers all major components.

**Important Note:** The extended warranty protection plan (***Preventive Maintenance Agreement required***) is available for purchase for up to 30 days after lift installation. An extended purchase availability of up to 90 days after installation is available for an additional cost.

Protect your investment. Contact your local Garaventa dealer or Garaventa Lift for more information.

Thank you for purchasing your Garaventa Elvoron. We welcome your comments on this product or any of the related instructional material.